



<http://suncoreus.com>

LED Street Light Series

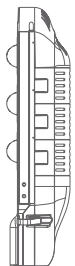
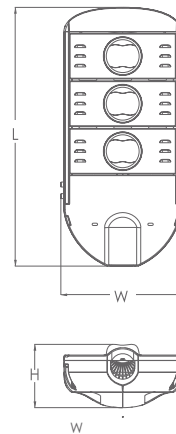
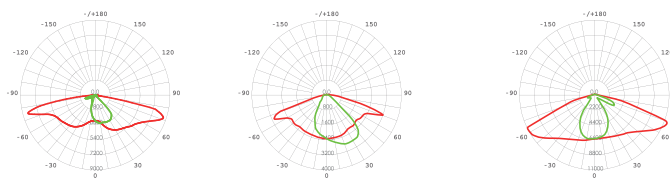


Flexible optical design- multiple light distributions
 Excellent heat dissipation- highly efficiency driver and aircraft grade aluminum provide excellent heat dissipation
 Flexible and portable - - lightweight design. Available with a wide range of voltage and wattage optional.



IP65

LED Street Light Tissot-COB Series



Applications :

Applied in urban arterial road, trunk road, rural road, factory lighting, bridges, etc.

Product Parameters

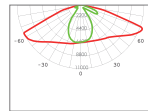
Model No.	S060C1-N-K01	S090C2-N-K01	S120C3-N-K01	S200C4-N-K01	S300C5-N-K01
Voltage	AC 100□277V				
Power Efficiency	130%				
Power Factor	> 0.95				
Power	60W	90W	120W	200W	300W
Light Effect	130lm/W				
Luminous Flux	7800lm	11700lm	15600lm	26000lm	33000lm/39000lm
Tj	< 70°C				
Light distribution curve	/				
Beam Angle	Equal brightness/Equal illumination				
CCT	3000K-6500K				
CRI	> Ra70				
Working temperature	-35°C□+60°C (-32 F- 140 F) , 10%□90%R				
Storage Temperature	-40°C□+50°C				
Life Time	50000H				
Material	Aluminium alloy+PC				
Size (mm)	576*326*164	576*326*164	669*326*164	855*326*164	948*326*164
IP level	IP65				

Example : DIALUX environment simulation test

Power	Luminous flux	Mounting Height	Pole Distance	Width	Boom Angle	Boom Length	Arrangement
60W	7800lm	9m	25m	14m	15.0 °	0.5 m	Double row, with offset

Photometric Results

Length: 25.000 m, Width: 14.000 m
 Grid: 10 x 12 Points
 Accompanying Street Elements: Street 1.
 tarmac: R3, q0: 0.070
 Selected Lighting Class: ME4a

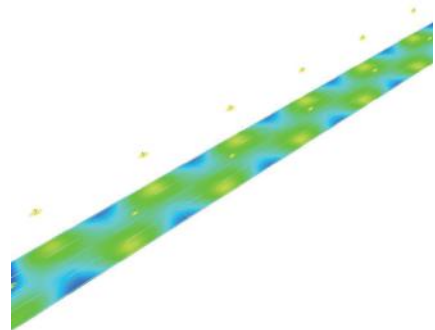


(All lighting performance requirements are met.)

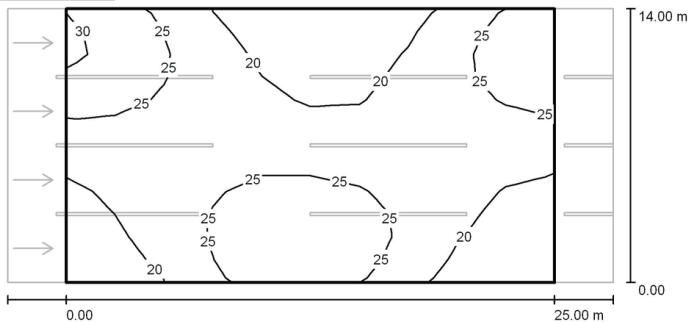
Calculated values:
 Required values according to class:
 Fulfilled/Not fulfilled:

L_{av} [cd/m ²]	U0	UI	TI [%]	SR
1.49	0.71	0.78	10	0.54
≥ 0.75	≥ 0.40	≥ 0.60	≤ 15	≥ 0.50
✓	✓	✓	✓	✓

False Color Rendering



Isolines (E)



Values in Lux, Scale 1 : 222

Grid: 10 x 12 Points

E_{av} [lx]	E_{min} [lx]	E_{max} [lx]	u0	E_{min} / E_{max}
23	16	30	0.713	0.540

